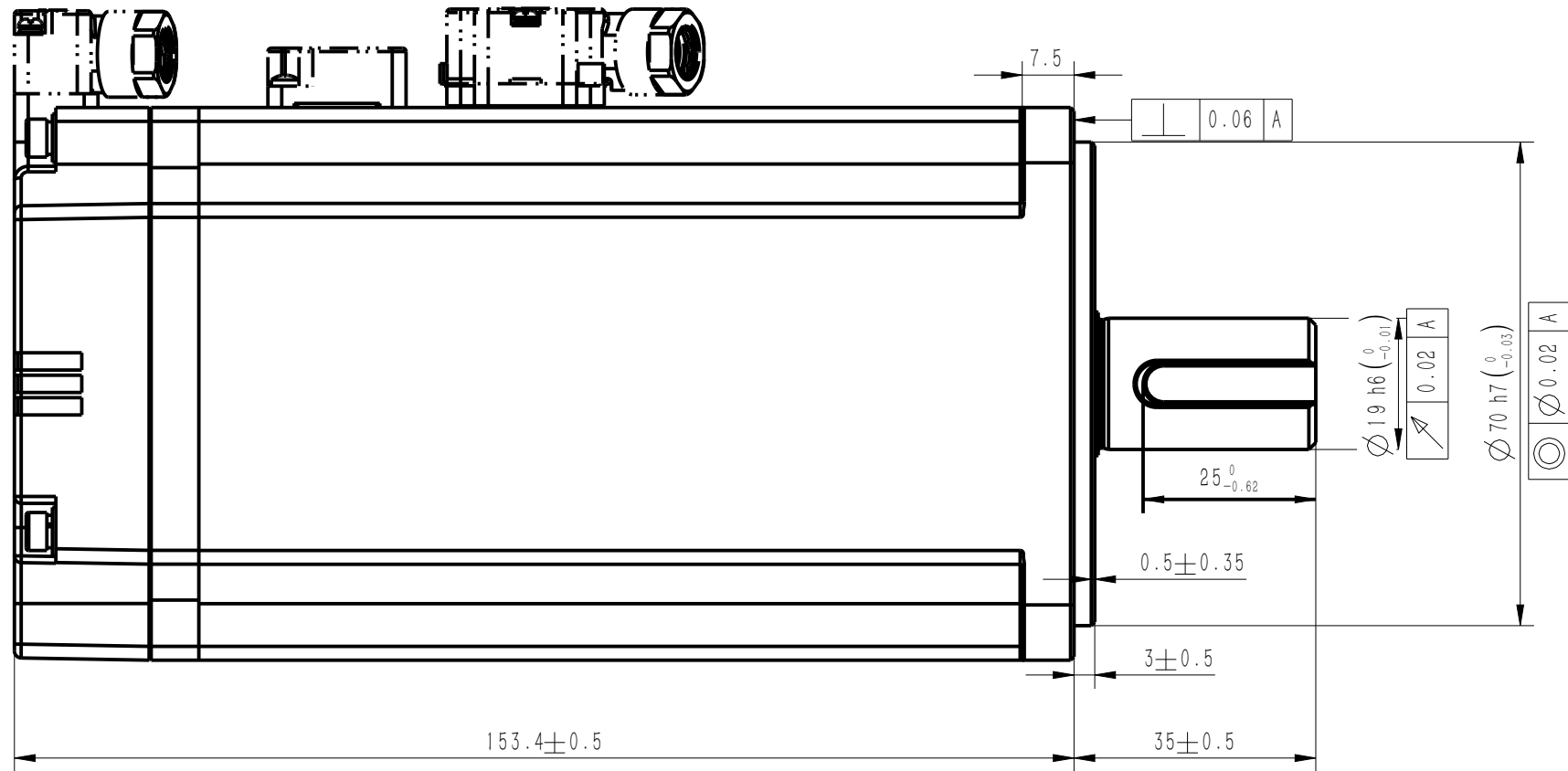
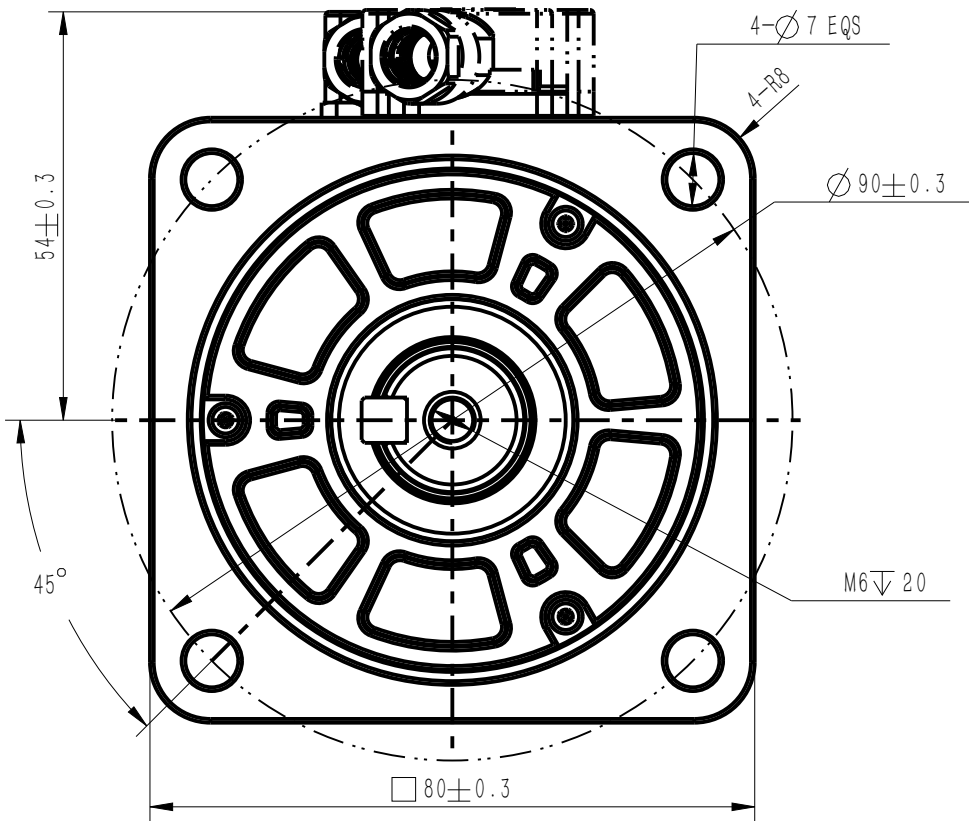


正样
2023.09.26
B00

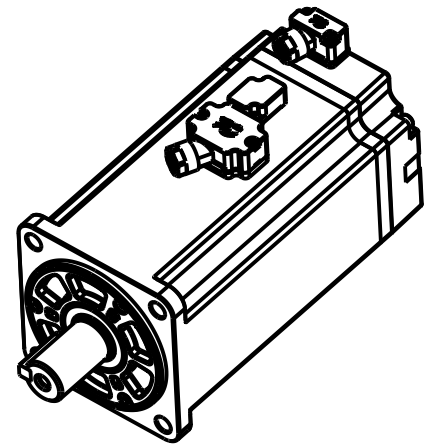
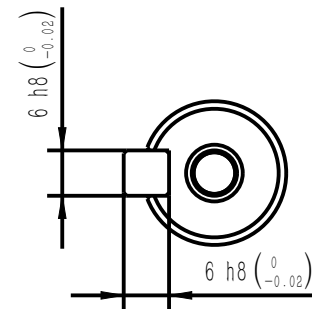
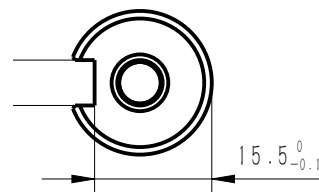
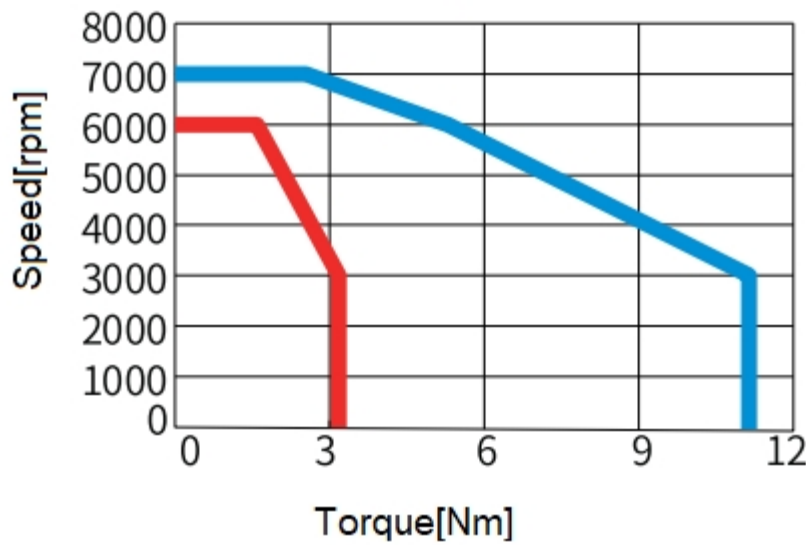
Copyright: Copyright infringement reserved.

外部公开

Unit: Millimeter (mm)



Continuous duty zone
Intermittent duty zone



Basic function parameters	
Rated power KW	1
Rated voltage V	220
Rated current A	≤ 6.5
Peak current at rated speed A	≤ 24
Rated torque Nm	3.18
Peak torque at rated speed Nm	11.1
Rated speed rpm	3000
Max speed rpm	7000
Rotor inertia kg·cm2	1.97
Encoder resolution	26bit
Insulation class	F
Protection level	IP67
Static torque of brake Nm	≥ 3.2
Brake power supply	24
Duty cycle	S1
Radial line load N	≤ 392
Axial load N	≤ 147

				Motor Outline Drawing			01118374-WX		
B00	New Archive	/	20230901						
Version	Change method	Changed by	Date						
Design	/						Mark	INOVANCE	
Check	/								
Craft	/								
Verify	/			Weight	Scale	Version	Page 1 of 1		
Standardization	/			3.27 kg	1:1	B00	Model		MS1H1-10C30CB-S634R-INT
Approve	/								